

**SCANNED**

Date: 2/24/10

TYLER COUNTY COMMISSIONERS COURT  
SPECIAL MEETING  
January 15, 2010 ---- 8:30 a.m.

THE STATE OF TEXAS                      ON THIS THE 15th day of January, 2010 the  
Commissioners' Court in and for Tyler County, Texas convened in a Special Meeting at the  
Commissioners' Courtroom in Woodville, Texas, the following members of the Court present,  
to wit:

JACQUES L. BLANCHETTE	COUNTY JUDGE, Presiding
MARTIN NASH	COMMISSIONER, PCT. #1
RUSTY HUGHES	COMMISSIONER, PCT. #2
MIKE MARSHALL	COMMISSIONER, PCT. #3
JACK WALSTON	COMMISSIONER, PCT. #4
DONECE GREGORY	COUNTY CLERK, EX OFFICIO

The following were absent: none    thereby constituting a quorum. In addition to the above  
were:

JOYCE MOORE	COUNTY AUDITOR
JOE SMITH	CRIMINAL DISTRICT ATTORNEY
SHARON FULLER	COUNTY TREASURER
DAVID HENNIGAN	SHERIFF

The invocation was delivered by Troy Richardson, First Baptist Church of Warren. The pledge  
to the Texas Flag was led by Commissioner Nash.

Lynette Cruse presented a status report of tax collections. She accounted for the conversion  
problems with the new computer system. The tax statements were now all out. She stated that  
although they had several problems, it was going to be a better system and should not have  
these issues next year.

Judge Blanchette presented Garry Mattingly with a plaque for service to County Court. Mr.  
Mattingly will remain the bailiff for the District Court. His wife, Elizabeth, was also in  
attendance.

The County Clerk had been out of the office due to the V.G. Young Institute seminar, therefore  
minutes were not available.

A motion was made by **Judge Blanchette** to approve paying the **bills**, as presented by the  
County Auditor, with the addition of the 1<sup>st</sup> quarter payment to Worker's Compensation. The  
motion was seconded by **Commissioner Marshall**. All voted yes and none no. SEE  
ATTACHED ACCOUNTS PAYABLE CLAIM LIST.

A motion was made by **Commissioner Nash** to approve the **monthly report** from the  
**Juvenile Probation department**. The motion was seconded by **Commissioner Hughes**. All  
voted yes and none no. SEE ATTACHED REPORT

**Commissioner Walston** motioned to approve the **monthly report** from the **Justice of Peace,  
Pct. #1**. The motion was seconded by **Commissioner Marshall**. All voted yes and none no.  
SEE ATTACHED REPORT

**Judge Blanchette** motioned to provide two **port-a-potties** for the **Tyler County Dogwood  
Festival** event, to be paid from the economic development funds. The motion was seconded  
by **Commissioner Walston**. All voted yes and none no.

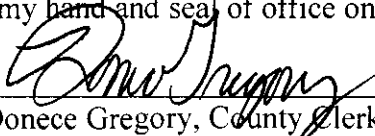
A motion was made by **Commissioner Nash** to approve payment to Ogden Surveying, LLC in  
the amount of \$2900 out of **Contingency line item**. This survey was of property previously  
purchased from Warren ISD. **Commissioner Walston** seconded the motion. All voted yes and  
none no. SEE ATTACHED LEGAL DESCRIPTION AND PLAT

Commissioner Walston motioned and Commissioner Hughes seconded the meeting to be  
adjourned. All voted yes and none no.

THERE BEING NO FURTHER BUSINESS, THE MEETING ADJOURNED: 8:49 a.m.

I, Donece Gregory, County Clerk and ex officio member of the Tyler County Commissioners Court, do hereby certify to the fact that the above is a true and correct record of the Tyler County Commissioners Court session held on January 15, 2010.

Witness my hand and seal of office on this the 9<sup>th</sup> day of February, 2010.

Attest:   
Donece Gregory, County Clerk  
Tyler County, Texas

## ALL RECORDS FROM 01/15/2010 TO 01/15/2010 DATE-TO-BE-PAID

VENDOR NAME	ACCOUNT #	ACCOUNT NAME	ITEM/REASON	INVOICE #	VP DATE	DATE TRF PD NO	AMOUNT
A-AARON ROOFING REPAIR	2010 010-442-010	REPAIRS TO COURT	MAIN,BLDG.	NOV10,2009	01/08/2010	01/15/2010	554.00
ACE IMAGEWEAR	2010 010-442-008	UNIFORMS	3719/COJUD	03484	01/07/2010	01/15/2010	88.10
ACE IMAGEWEAR	2010 010-442-008	UNIFORMS	3719/COJUD	04984	01/07/2010	01/15/2010	88.10
ACE IMAGEWEAR	2010 010-442-008	UNIFORMS	3719/COJUD	06275	01/07/2010	01/15/2010	88.10
ACE IMAGEWEAR	2010 010-442-008	UNIFORMS	3719/COJUD	07679	01/07/2010	01/15/2010	88.10
ACE IMAGEWEAR	2010 010-442-008	UNIFORMS	3719/COJUD	09139	01/07/2010	01/15/2010	88.10
ALLAN SHIVERS LIBRARY	2010 010-401-027	ALLEN SHIVERS LI	QUARTERLY ALLOTMENT	JAN2010	01/13/2010	01/15/2010	25,000.00
AMS PRINTING & MAILING	2010 010-401-008	POSTAGE FOR POST	944/2009 TAX STMTS	944	01/03/2010	01/15/2010	4,803.94
AUTOMOTIVE GLASSWORKS	2010 010-426-028	REPAIRS TO VEHIC	UNIT #18/TCSD	1-DW15068BY	01/12/2010	01/15/2010	180.00
BJ TRANSPORT SERVICE IN	2010 010-401-043	AUTOPSIES	HARVEY, SUSAN	2006	01/04/2010	01/15/2010	225.00
BJ TRANSPORT SERVICE IN	2010 010-401-043	AUTOPSIES	HARVEY, SUSAN	2007	01/04/2010	01/15/2010	225.00
BYTHEWOOD, AMY R.	2010 010-408-055	COURT APPOINTED	ALLEN,MELISSA	11267/11268	01/11/2010	01/15/2010	600.00
CHESTER VOL. FIRE DEPT.	2010 010-401-024	RURAL FIRE PROTE	MONTHLY ALLOWANCE	2009	01/13/2010	01/15/2010	150.00
CHILD ABUSE & FORENSIC	2010 010-419-016	DNA LAB FEES	09-004622/CDA	09-135	01/14/2010	01/15/2010	700.00
CHILD ABUSE & FORENSIC	2010 010-419-016	DNA LAB FEES	09-004622/CDA	09-194	01/14/2010	01/15/2010	700.00
CIT TECHNOLOGY FIN SERV	2010 010-440-018	EQUIPMENT LEASE	930-0039478-000/EXT	15904387	01/05/2010	01/15/2010	55.00
CIT TECHNOLOGY FIN SERV	2010 010-440-018	EQUIPMENT LEASE	930-0039477-000/JP1	15904386	01/05/2010	01/15/2010	55.00
COLMESNEIL VOL. FIRE DE	2010 010-401-026	RURAL FIRE PROTE	MONTHLY ALLOWANCE	2009	01/13/2010	01/15/2010	150.00
COLOR GRAPHICS CO.	2010 010-401-008	POSTAGE FOR POST	MAILING/VOTER CARDS	103912	01/08/2010	01/15/2010	433.13
COUNTY JUDGES EDUCATION	2010 010-421-012	EDUCATION.GOVERN	219849/COJUD	6284034	01/02/2010	01/15/2010	100.00
STAT CVD KELLI R. WHITE	2010 010-423-020	ASSOCIATION DUES	FULLER, SHARON	17530	01/04/2010	01/15/2010	150.00
DAM B VOL. FIRE DEPT.	2010 010-401-024	RURAL FIRE PROTE	MONTHLY ALLOWANCE	2009	01/13/2010	01/15/2010	150.00
DEEP EAST TEXAS	2010 010-401-021	DETDOG TRAVEL	DETDOG LUNCHEON/OCT	OCTOBER09	01/07/2010	01/15/2010	31.00
DEEP EAST TEXAS	2010 010-401-021	DETDOG TRAVEL	DETDOG LUNCHEON/NOV	NOVEMBER09	01/07/2010	01/15/2010	30.00
DEEP EAST TEXAS	2010 010-401-021	DETDOG TRAVEL	DETDOG LUNCHEON/DEC	DECEMBER09	01/07/2010	01/15/2010	40.00
DEEP EAST TEXAS COUNTY	2010 010-421-020	ASSOCIATION DUES	MEMB.DUES/COJUD	201000JUD	01/07/2010	01/15/2010	125.00
DOCHES COMMUNITY CREDIT	2010 010-392-030	REFUNDS	REPLACE CK#95076/ER	20224	01/12/2010	01/15/2010	3,835.40
DOGWOOD COUNTRY FLORIST	2010 010-442-010	REPAIRS TO COURT	4337/COJUD	4337	01/08/2010	01/15/2010	32.48
DOGWOOD EMS	2010 010-427-043	PRISONER MEDICAL	RIDER,ANDREA/TCSD	12-9-09AR	01/12/2010	01/15/2010	492.99
DOGWOOD EMS	2010 010-427-043	PRISONER MEDICAL	HOOKS, SANDRA/TCSD	12-8-09SAH	01/12/2010	01/15/2010	492.99
DP SOLUTIONS, INC.	2010 010-440-012	EQUIPMENT REPAIR	LABOR 649.15/AS400	230597	01/08/2010	01/15/2010	1,437.83
ELECTION SYSTEMS & SOFT	2010 010-401-050	ELECTION EXPENSE	T94109/CCLK	728280	01/11/2010	01/15/2010	12,620.00
ENTERGY	2010 010-442-032	UTILITIES-BEST B	3468292/CCLK	3468292:1-10	01/11/2010	01/15/2010	359.06
ENTERGY	2010 010-442-032	UTILITIES-JUSTIC	1227222/JUSTICE CTR	1227222:1-10	01/13/2010	01/15/2010	31.28
EXCEL CAR WASH, INC.	2010 010-426-028	REPAIRS TO VEHIC	LABOR 14.50/TCSD	14049333	01/12/2010	01/15/2010	14.50
EXCEL CAR WASH, INC.	2010 010-426-028	SAS, OIL, GREASE	LABOR 34.25/TCSD	14049565	01/12/2010	01/15/2010	57.70
FEDEX	2010 010-426-007	OFFICE SUPPLIES	1706-0613-2/TCSD	R-435-07685	01/12/2010	01/15/2010	38.06
FP MAILING SOLUTIONS	2010 010-440-018	EQUIPMENT LEASE	500045071/TAX	R1059451159	01/08/2010	01/15/2010	105.00
FRED VOL. FIRE DEPARTME	2010 010-401-024	RURAL FIRE PROTE	MONTHLY ALLOWANCE	2	01/13/2010	01/15/2010	150.00
FULLER, SHANNON	2010 010-439-024	OUT-OF-COUNTY TR	HOTEL/NIGHTS/TRAINI	1731-24/108F	01/14/2010	01/15/2010	539.26
GRAVES HUMPHRIES STAHL,	2010 010-363-021	JUSTICE-OF-PEACE	PC30/JP1	252709	01/05/2010	01/15/2010	500.40
GRAVES HUMPHRIES STAHL,	2010 010-363-021	JUSTICE-OF-PEACE	PC30/JP1	20709	01/05/2010	01/15/2010	328.20
GRAVES HUMPHRIES STAHL,	2010 010-363-021	JUSTICE-OF-PEACE	PC30/JP1	20309	01/05/2010	01/15/2010	328.00
GRAVES HUMPHRIES STAHL,	2010 010-363-021	JUSTICE-OF-PEACE	PC30/JP1	25009	01/05/2010	01/15/2010	105.02
GT DISTRIBUTORS, INC.	2010 010-426-008	DEPUTIES SUPPLIE	003939/TCSD	INV0293721	01/12/2010	01/15/2010	225.74
GT DISTRIBUTORS, INC.	2010 010-426-008	DEPUTIES SUPPLIE	003939/TCSD	INV0293928	01/12/2010	01/15/2010	114.57
INDOFF OFFICE SUPPLIES	2010 010-421-007	OFFICE SUPPLIES	133749/COJUD	1364375	01/07/2010	01/15/2010	611.14
INDOFF OFFICE SUPPLIES	2010 010-440-007	SUPPLIES	133742/COJUD	1364379A	01/07/2010	01/15/2010	173.21
INDOFF OFFICE SUPPLIES	2010 010-440-007	SUPPLIES	135084/TAX	1350973	01/08/2010	01/15/2010	110.97
INNOVATIVE LEASING	2010 010-440-018	EQUIPMENT LEASE	001-0034127-001/TAX	6045325687	01/08/2010	01/15/2010	133.41
INVENTORY TRADING COMPA	2010 010-426-041	UNIFORMS	125725/TCSD	125725	01/12/2010	01/15/2010	675.00
JARROTT'S PHARMACY	2010 010-427-043	PRISONER MEDICAL	HARRINGTON,DEBRA/TC	12/25/09	01/12/2010	01/15/2010	167.95
JARROTT'S PHARMACY	2010 010-427-043	PRISONER MEDICAL	HOOKS, SANDRA/TCSD	12/25/09A	01/12/2010	01/15/2010	94.45
JARROTT'S PHARMACY	2010 010-427-043	PRISONER MEDICAL	MANESS,BILLY/TCSD	12/25/09B	01/12/2010	01/15/2010	54.61
JARROTT'S PHARMACY	2010 010-427-043	PRISONER MEDICAL	DEPT TYLER CTV SHER	12/25/09C	01/12/2010	01/15/2010	7.35

## ALL RECORDS FROM 01/15/2010 TO 01/15/2010 DATE-TO-BE-PAID

VENDOR NAME	ACCOUNT #	ACCOUNT NAME	ITEM/REASON	INVOICE #	VP DATE	DATE TBP	PO NO	AMOUNT
JARROTT'S PHARMACY	2010 010-427-043	PRISONER MEDICAL	STEWART,RUTH/TCSD	12/25/09D	01/12/2010	01/15/2010		85.70
JARROTT'S PHARMACY	2010 010-427-043	PRISONER MEDICAL	SWINNEY,KIMBERLY/TC	12/25/09E	01/12/2010	01/15/2010		75.46
JARROTT'S PHARMACY	2010 010-427-043	PRISONER MEDICAL	WIGGINS, ELVIS/TCSD	12/25/09F	01/12/2010	01/15/2010		82.67
JARROTT'S PHARMACY	2010 010-427-043	PRISONER MEDICAL	GALLAS,LOUIS C	12/25/09G	01/13/2010	01/15/2010		21.56
KEY EQUIPMENT FINANCE	2010 010-440-018	EQUIPMENT LEASE	591112261/TAX	59111226100	01/08/2010	01/15/2010		115.00
LAKENAV TIRE & SERVICE	2010 010-426-029	GAS, OIL, GREASE	1063/TCSD	082480	01/12/2010	01/15/2010		37.45
LARRY TREST AUTO BROKER	2010 010-426-028	REPAIRS TO VEHIC	LABOR 75.00/TCSD	12-15-09TCSD	01/12/2010	01/15/2010		244.24
LARRY TREST AUTO BROKER	2010 010-426-028	REPAIRS TO VEHIC	210.00-LABOR/TCSD	12-14-09TCSD	01/13/2010	01/15/2010		537.97
MANN FURNITURE & APPLIA	2010 010-423-045	HEATING & COOLIN	SN#LJB20217/D9DLK	2150	01/05/2010	01/15/2010		999.85
MANN, ROBERT H. ATTY.	2010 010-408-055	COURT APPOINTED	QUALLS, STEVEAN MIC	11.2855MD	01/11/2010	01/15/2010		400.00
MANN, ROBERT H. ATTY.	2010 010-408-055	COURT APPOINTED	MCUEEN, JACKIE MATH	10,749JMM	01/11/2010	01/15/2010		400.00
MOCLURE FURNITURE	2010 010-401-034	SHERIFF'S POSSE	13705/SHERIFF'S POS	13705	01/06/2010	01/15/2010		499.85
MODICA BROTHERS	2010 010-442-010	REPAIRS TO COURT	CO. JUD./COMM.SRV.	W-240754	01/07/2010	01/15/2010		50.00
MODICA BROTHERS	2010 010-442-010	REPAIRS TO COURT	CO. JUD./COMM.SRV.	W-240027	01/07/2010	01/15/2010		50.00
MODICA BROTHERS	2010 010-426-029	GAS, OIL, GREASE	LABOR 16.00/TCSD	12/09TCSD	01/12/2010	01/15/2010		297.20
MODICA BROTHERS	2010 010-426-030	TIRES, TUBES	LABOR 134.00/TCSD	12/09TCSD02	01/12/2010	01/15/2010		579.55
MODICA BROTHERS	2010 010-426-030	REPAIRS TO VEHIC	LABOR 362.50/TCSD	12/09TCSD03	01/12/2010	01/15/2010		904.22
MUSIC MOUNTAIN WATER CO	2010 010-422-007	OFFICE SUPPLIES	79956200/COAUD	1213011095	01/05/2010	01/15/2010		19.14
NALCOM WIRELESS COMMUNT	2010 010-401-034	SHERIFF'S POSSE	LABOR 20.00/TCSD	30128	01/05/2010	01/15/2010		1,300.00
NATIONAL ASSOCIATION OF	2009 010-401-020	ASSOCIATION DUES	CTV.MEM.DUES/2010	60995	12/22/2009	01/15/2010		420.00
NET DATA CORP.	2010 010-440-020	SUPPORT SERVICES	CHILD SUP 01/01-12/	11979:SUP	01/06/2010	01/15/2010		3,500.00
NET DATA CORP.	2010 010-440-020	SUPPORT SERVICES	JURY 01/01-12/31/10	11979:JUR	01/06/2010	01/15/2010		4,159.00
NET DATA CORP.	2010 010-440-020	SUPPORT SERVICES	FINANCIAL 01/01-12/	11979:FIN	01/06/2010	01/15/2010		16,323.00
NET DATA CORP.	2010 010-440-020	SUPPORT SERVICES	95 CLK. 01/01-12/3	11979:BOC	01/06/2010	01/15/2010		8,472.00
NET DATA CORP.	2010 010-440-020	SUPPORT SERVICES	INDEXING 01/01-12/	11979:NDX	01/06/2010	01/15/2010		3,272.00
NET DATA CORP.	2010 010-440-020	SUPPORT SERVICES	LAW ENFD 01/01-12/	11979:LAW	01/06/2010	01/15/2010		15,400.00
NET DATA CORP.	2010 010-440-020	SUPPORT SERVICES	JCF 01/01-12/31/10	11979:JCF	01/06/2010	01/15/2010		15,823.00
NET DATA CORP.	2010 010-440-020	SUPPORT SERVICES	CO CASE 01/01-12/3	11979:COO	01/06/2010	01/15/2010		9,411.00
NET DATA CORP.	2010 010-440-020	SUPPORT SERVICES	12201/COCLK	12201A	01/11/2010	01/15/2010		225.00
O'REILLY AUTO PARTS	2010 010-426-028	REPAIRS TO VEHIC	596507/TCSD	1451304346	01/12/2010	01/15/2010		24.95
O'REILLY AUTO PARTS	2010 010-426-028	REPAIRS TO VEHIC	596507/TCSD	1451304926	01/12/2010	01/15/2010		2.99
O'REILLY AUTO PARTS	2010 010-426-028	REPAIRS TO VEHIC	596507/TCSD	1451305721	01/12/2010	01/15/2010		5.49
PARKER LUMBER	2010 010-442-010	REPAIRS TO COURT	22725/COURTHOUSE	20807	01/07/2010	01/15/2010		50.00
PARKER LUMBER	2010 010-442-010	REPAIRS TO COURT	22725/COURTHOUSE	20945	01/07/2010	01/15/2010		24.99
PARKER LUMBER	2010 010-442-010	REPAIRS TO COURT	22725/COURTHOUSE	20977	01/07/2010	01/15/2010		2.99
PARKER LUMBER	2010 010-442-010	REPAIRS TO COURT	22725/COURTHOUSE	21122	01/07/2010	01/15/2010		23.16
PARKER LUMBER	2010 010-442-010	REPAIRS TO COURT	22725/COURTHOUSE	21161	01/07/2010	01/15/2010		9.27
PARKER LUMBER	2010 010-442-010	REPAIRS TO COURT	22725/COURTHOUSE	21176	01/07/2010	01/15/2010		127.75
PITNEY BOWES	2010 010-426-007	OFFICE SUPPLIES	9447477/JP1	9447477-DC09	01/12/2010	01/15/2010		142.50
PITNEY BOWES	2010 010-411-007	OFFICE SUPPLIES	9447477/JP1	9447477-DC09	01/12/2010	01/15/2010		142.50
FITNEY BOWES GLOBAL FIN	2010 010-440-018	EQUIPMENT LEASE	1242785-DC09	1242785-DC09	01/04/2010	01/15/2010		202.00
FITNEY BOWES INC.	2010 010-440-018	SUPPLIES	0100-3109-00-4/COAU	665719	01/05/2010	01/15/2010		34.00
POCKET PRESS, INC.	2010 010-426-008	DEPUTIES SUPPLIE	50240/TCSD	50240	01/12/2010	01/15/2010		169.80
ROBERS, FRANKIE EUGENE	2010 010-436-030	COUNTY HEALTH IN	DISPATCH/ROBERS,FRK	12-23-09FR	01/11/2010	01/15/2010		150.00
ROBERS, FRANKIE EUGENE	2010 010-436-030	COUNTY HEALTH IN	HEALTH CONSULTANT F	01152010	01/12/2010	01/15/2010		50.00
SCOTT-MERRIMAN, INC.	2010 010-440-007	SUPPLIES	TY02/JP1	042324	01/05/2010	01/15/2010		907.46
BIRCHIE FINGERPRINT LAB	2010 010-426-008	DEPUTIES SUPPLIE	00-A75979/TCSD	0534957-IN	01/12/2010	01/15/2010		192.83
SOUTHEAST TEXAS FORENSI	2010 010-401-043	AUTOPSIES	HARVEY,SUSAN	09-1268	01/04/2010	01/15/2010		1,500.00
SOUTHEAST TEXAS FORENSI	2010 010-401-043	AUTOPSIES	10-0104/MITCHELL,ED	10-0104	01/08/2010	01/15/2010		1,500.00
SOUTHEAST TEXAS ROAD, I	2010 010-401-038	SOUTHEAST TX R O	SOUTHEAST TEXAS RC	FY2010	01/07/2010	01/15/2010		500.00
SPARKLETT'S & SIERRA SPR	2010 010-420-007	OFFICE SUPPLIES	21549393631084/TAX	12093631084	01/02/2010	01/15/2010		17.30
SPARKLETT'S & SIERRA SPR	2010 010-420-007	OFFICE SUPPLIES	21549393631084/TAX	11093631084	01/12/2010	01/15/2010		13.39
SPINDLEMEDIA, INC.	2010 010-453-044	OFFICE EQUIPMENT	19362/2ND INVOICE	19362	01/08/2010	01/15/2010		18,400.00
SPINDLEMEDIA, INC.	2010 010-453-044	OFFICE EQUIPMENT	19363/3RD INVOICE	19363	01/08/2010	01/15/2010		12,200.00
SPINDLEMEDIA, INC.	2010 010-440-020	SUPPORT SERVICES	ANNUAL MAINT./CCT.0	10364	01/08/2010	01/15/2010		10,500.00

## ALL RECORDS FROM 01/15/2010 TO 01/15/2010 DATE-TO-BE-PAID

VENDOR NAME	ACCOUNT #	ACCOUNT NAME	ITEM/REASON	INVOICE #	VP DATE	DATE TRP PD NO	AMOUNT
SFURSER VOL. FIRE DEPT.	2010 010-401-026	RURAL FIRE PROTE	MONTHLY ALLOWANCE	2009	01/12/2010	01/15/2010	150.00
STAMPS OFFICE SUPPLY	2010 010-411-007	OFFICE SUPPLIES	JP FCT.1/051427	041427	01/12/2010	01/15/2010	30.00
STAMPS OFFICE SUPPLY	2010 010-440-007	SUPPLIES	TOSO	041420	01/12/2010	01/15/2010	53.10
STAMPS OFFICE SUPPLY	2010 010-426-007	OFFICE SUPPLIES	TOSO	041420A	01/12/2010	01/15/2010	57.98
STORY-WRIGHT	2010 010-440-007	SUPPLIES	104307/COAUD	10-71540	01/05/2010	01/15/2010	7.89
STORY-WRIGHT	2010 010-422-007	OFFICE SUPPLIES	104307/COAUD	10-71522	01/05/2010	01/15/2010	10.02
STORY-WRIGHT	2010 010-440-007	SUPPLIES	104307/COAUD	10-71941	01/06/2010	01/15/2010	15.78
STORY-WRIGHT	2010 010-422-007	OFFICE SUPPLIES	104307/COAUD	10-71931	01/06/2010	01/15/2010	10.02
STORY-WRIGHT	2010 010-440-007	SUPPLIES	103263/TOSO	10-71970	01/12/2010	01/15/2010	479.25
SULLIVANS HARDWARE	2010 010-442-010	REPAIRS TO COURT	CD. JUD./MAINTENANC	0822009	01/07/2010	01/15/2010	1,151.06
SULLIVANS HARDWARE	2010 010-442-010	REPAIRS AT JUSTI	TOSO	101509	01/12/2010	01/15/2010	6.65
SULLIVANS HARDWARE	2010 010-442-010	REPAIRS AT JUSTI	TOSO	101515	01/12/2010	01/15/2010	1.04
SWEARINGEN, ROBERT E.,	2010 010-436-022	COUNTY HEALTH OF	MONTHLY ALLOWANCE	2009	01/13/2010	01/15/2010	200.00
SYSCO FOOD SERVICES	2010 010-427-036	PRISONER MEALS	819219/JAIL	912140155	01/12/2010	01/15/2010	1,243.73
SYSCO FOOD SERVICES	2010 010-427-036	PRISONER MEALS	819219/JAIL	912170366	01/12/2010	01/15/2010	462.14
SYSCO FOOD SERVICES	2010 010-427-036	PRISONER MEALS	819219/JAIL	912210091	01/12/2010	01/15/2010	868.44
TDCAA NOW TRUST FUND	2010 010-419-007	OFFICE SUPPLIES	28115/CDA	28115	01/14/2010	01/15/2010	246.00
TELSTAR SPECIALTY PRODU	2010 010-442-010	REPAIRS TO COURT	5937/COJUD	5937	01/08/2010	01/15/2010	1,610.20
TELSTAR SPECIALTY PRODU	2010 010-442-010	REPAIRS TO COURT	5932/COJUD	5932	01/13/2010	01/15/2010	32.95
TELSTAR SPECIALTY PRODU	2010 010-442-010	REPAIRS TO COURT	5963/COJUD	6092	01/13/2010	01/15/2010	775.25
TELSTAR SPECIALTY PRODU	2010 010-442-010	REPAIRS TO COURT	5963/COJUD	6049	01/13/2010	01/15/2010	490.50
TELSTAR SPECIALTY PRODU	2010 010-442-010	REPAIRS TO COURT	5963/COJUD	6082	01/13/2010	01/15/2010	124.50
TELSTAR SPECIALTY PRODU	2010 010-442-010	REPAIRS TO COURT	5963/COJUD	6090	01/13/2010	01/15/2010	52.62
TELSTAR SPECIALTY PRODU	2010 010-442-010	REPAIRS TO COURT	5963/COJUD	6119	01/13/2010	01/15/2010	460.40
TELSTAR SPECIALTY PRODU	2010 010-442-010	REPAIRS TO COURT	5963/COJUD	6149	01/13/2010	01/15/2010	639.70
TEXAS AGRILIFE EXTENSIO	2010 010-421-012	EDUCATION, GOVERN	1891/COJUD/A001026	2/9-11/10JLB	01/11/2010	01/15/2010	175.00
TEXAS JUSTICE COURT TRA	2010 010-412-012	TRAINING & EDUCA	TRAINING/REGIS./STU	4/5-8/1099	01/06/2010	01/15/2010	100.00
TEXAS STATE UNIVERSITY/	2010 010-411-012	TRAINING & EDUCA	FY10/REGIET/TURNER,	4/19-21/10TT	01/05/2010	01/15/2010	100.00
TIMBERMANS SUPPLY	2010 010-442-010	REPAIRS TO COURT	12032/COMM SRV.	226310	01/07/2010	01/15/2010	27.80
TIMBERMANS SUPPLY	2010 010-442-010	REPAIRS TO COURT	12032/COMM SRV.	226440	01/07/2010	01/15/2010	8.70
TIMBERMANS SUPPLY	2010 010-442-010	REPAIRS TO COURT	12032/COMM SRV.	226552	01/07/2010	01/15/2010	2.95
TIMBERMANS SUPPLY	2010 010-442-010	REPAIRS TO COURT	12032/COMM SRV.	226801	01/07/2010	01/15/2010	1.50
TOLARS FEED AND OUTDOOR	2010 010-442-010	REPAIRS TO COURT	11108/COURTHOUSE	914232	01/07/2010	01/15/2010	22.50
TYLER COUNTY AUTO PARTS	2010 010-442-010	REPAIRS TO COURT	7040/MAIN	428048	01/08/2010	01/15/2010	55.33
TYLER COUNTY AUTO PARTS	2010 010-442-010	REPAIRS TO COURT	7040/MAIN	428049	01/08/2010	01/15/2010	3.15
TYLER COUNTY BOOSTER	2010 010-422-007	OFFICE SUPPLIES	7762/TREAS	0019098	01/11/2010	01/15/2010	285.00
TYLER COUNTY HOSPITAL	2009 010-401-098	MISCELLANEOUS EX	WOODRONE, BOYLE	8589:12-15-0	12/21/2009	01/15/2010	53.00
TYLER COUNTY HOSPITAL	2009 010-401-098	MISCELLANEOUS EX	STURROCK, AUBREY	9560:12-15-0	12/21/2009	01/15/2010	40.00
TYLER COUNTY HOSPITAL	2009 010-401-098	MISCELLANEOUS EX	LOEHEL, BRANT	7263:12-15-0	12/21/2009	01/15/2010	40.00
TYLER COUNTY HOSPITAL	2010 010-427-043	PRISONER MEDICAL	LEVINESS, JIMMY DEAN	51003/8-21-0	01/04/2010	01/15/2010	698.69
TYLER COUNTY HOSPITAL	2010 010-427-043	PRISONER MEDICAL	LEVINESS, JIMMY DEAN	51003/7-15-0	01/04/2010	01/15/2010	345.03
TYLER COUNTY HOSPITAL	2010 010-427-043	PRISONER MEDICAL	LEVINESS, JIMMY DEAN	51003/9-18,1	01/04/2010	01/15/2010	281.97
TYLER COUNTY HOSPITAL	2010 010-401-098	MISCELLANEOUS EX	KEITH, BRUDE	2278:12-22-0	01/05/2010	01/15/2010	40.30
TYLER COUNTY HOSPITAL	2010 010-427-043	PRISONER MEDICAL	2272-HOCKS, SANDRA/T	2272/12-8-09	01/12/2010	01/15/2010	420.70
TYLER COUNTY HOSPITAL	2010 010-427-043	PRISONER MEDICAL	30350-SWEENEY, KIMS	30350/12-8-0	01/12/2010	01/15/2010	128.36
TYLER COUNTY HOSPITAL	2010 010-427-043	PRISONER MEDICAL	51003-LEVINESS, JIMM	51003/2-21,2	01/12/2010	01/15/2010	698.69
TYLER COUNTY RURAL FIRE	2010 010-401-026	RURAL FIRE PROTE	MONTHLY ALLOWANCE	2009	01/15/2010	01/15/2010	150.00
U PUMP IT	2010 010-442-010	REPAIRS TO COURT	UP TYCO COURT HOUSE/	804868	01/08/2010	01/15/2010	299.63
U PUMP IT	2010 010-426-029	GAS, OIL, GREASE	UP TYLERCDSH/TOSO	804872	01/12/2010	01/15/2010	5,948.23
VERIZON WIRELESS	2010 010-426-009	TELEPHONE	6855-00001/TOSO	6863260708	01/12/2010	01/15/2010	1,274.53
VOLZ & ASSOCIATES, INC	2010 010-401-049	COURTHOUSE HISTO	DECEMBER 31, 2009/CO	2129	01/11/2010	01/15/2010	544.28
WAL-MART COMMUNITY	2010 010-442-010	REPAIRS TO COURT	00776915/COJUD	6915:12-09	01/07/2010	01/15/2010	662.83
WAL-MART COMMUNITY	2010 010-442-007	JANITORS SUPPLIE	00776915/COJUD	6915:12-09A	01/07/2010	01/15/2010	26.04
WAL-MART COMMUNITY	2010 010-440-007	SUPPLIES	00776915/COJUD	6915:12-09B	01/07/2010	01/15/2010	137.23
WAL-MART COMMUNITY	2010 010-402-007	OFFICE SUPPLIES	00776899/COCLK	6999:12-09	01/11/2010	01/15/2010	42.99

## ALL RECORDS FROM 01/15/2010 TO 01/15/2010 DATE-TO-BE-PAID

VENDOR NAME	ACCOUNT #	ACCOUNT NAME	ITEM/REASON	INVOICE #	VP DATE	DATE TBP	PO NO	AMOUNT
WAL-MART COMMUNITY	2010 010-440-007	SUPPLIES	50005595/DPS	5595:12-09	01/12/2010	01/15/2010		53.91
WAL-MART COMMUNITY	2010 010-430-007	OFFICE SUPPLIES	50005595/DPS	5595:12-09A	01/12/2010	01/15/2010		91.26
WAL-MART COMMUNITY	2010 010-411-007	OFFICE SUPPLIES	20115797/JP1	5797:12-09	01/12/2010	01/15/2010		149.00
WAL-MART COMMUNITY	2010 010-427-037	CAMERA & FILM	00587809/TCSO	7809:12-09	01/12/2010	01/15/2010		102.96
WAL-MART COMMUNITY	2010 010-426-007	OFFICE SUPPLIES	00587809/TCSO	7809:12-09A	01/12/2010	01/15/2010		68.88
WAL-MART COMMUNITY	2010 010-426-005	DEPUTIES SUPPLIE	00587809/TCSO	7809:12-09B	01/12/2010	01/15/2010		129.05
WAL-MART COMMUNITY	2010 010-440-007	SUPPLIES	00960428/CDA	0428:12-09	01/14/2010	01/15/2010		29.94
WAL-MART COMMUNITY	2010 010-419-007	OFFICE SUPPLIES	00960428/CDA	0428:12-09A	01/14/2010	01/15/2010		81.16
WALLING SIGNS & GRAPHIC	2010 010-426-007	OFFICE SUPPLIES	TYDOSH/4199	4199	01/12/2010	01/15/2010		241.15
WALLING SIGNS & GRAPHIC	2010 010-419-007	OFFICE SUPPLIES	4296/CDA	4296	01/14/2010	01/15/2010		112.70
WARREN VOL. FIRE DEPT.	2010 010-401-026	RURAL FIRE PROTE	MONTHLY ALLOWANCE	2	01/13/2010	01/15/2010		150.00
WEATHERFORD, BRYAN	2010 010-411-012	TRAINING & EDUCA	WEATHERFORD/MILEAGE	1/10-12/10BW	01/14/2010	01/15/2010		294.25
WEATHERFORD, BRYAN	2010 010-411-012	TRAINING & EDUCA	WEATHERFORD/HOTEL	1/10-12/10BW	01/14/2010	01/15/2010		198.39
WEST GROUF	2010 010-426-008	DEPUTIES SUPPLIE	1000381235/TCSO	819645479	01/12/2010	01/15/2010		42.50
WEST GROUF	2010 010-402-007	OFFICE SUPPLIES	1000412654/COCLK	819648113	01/11/2010	01/15/2010		45.00
WHITE TAIL RIDGE FIRE D	2010 010-401-026	RURAL FIRE PROTE	MONTHLY ALLOWANCE	200	01/13/2010	01/15/2010		150.00
WILDWOOD VOL. FIRE DEPT	2010 010-401-026	RURAL FIRE PROTE	MONTHLY ALLOWANCE	200F	01/13/2010	01/15/2010		150.00
WOODVILLE VOL. FIRE DEP	2010 010-401-026	RURAL FIRE PROTE	MONTHLY ALLOWANCE	200F	01/13/2010	01/15/2010		150.00
WRIGHT, RUSSELL J	2010 010-408-055	COURT APPOINTED	WILLIAMS, CLARRISSA	10,365CW	01/12/2010	01/15/2010		400.00
WRIGHT, RUSSELL J	2010 010-408-055	COURT APPOINTED	CHANCE, CHRISTOPHER	10,796CJC	01/12/2010	01/15/2010		150.00
XEROX CORPORATION	2010 010-440-015	SERVIDE CONTRACT	711223717/DECLK	045224649	01/11/2010	01/15/2010		28.00

---

 222,547.28

## ALL RECORDS FROM 01/15/2010 TO 01/15/2010 DATE-TO-BE-PAID

VENDOR NAME	ACCOUNT #	ACCOUNT NAME	ITEM/REASON	INVOICE #	VP DATE	DATE TRP	PO NO	AMOUNT
A-1 JOHNNY PORTABLE TOI	2010 021-451-028	MACHINERY MAINT	87004/PCT.1	87004	01/08/2010	01/15/2010		35.00
GARDNER OIL, INC.	2010 021-451-028	GREASE, OIL, GREASE	TYCO PCT1	96317	01/08/2010	01/15/2010		2,059.61
J & M DOZER	2010 021-451-028	ROAD MATERIAL	ROAD MATERIAL/PCT.1	533250	01/13/2010	01/15/2010		4,000.00
LAKES AREAS SEPTIC & SL	2010 021-451-028	MACHINERY MAINT	12459/TREAC	12459	01/08/2010	01/15/2010		35.00
MODICA BROTHERS	2010 021-451-030	TIRES, TUBES	LABOR 81.00/PCT.1	W-24097E	01/08/2010	01/15/2010		408.99
MODICA BROTHERS	2010 021-451-030	TIRES, TUBES	LABOR 15.00/PCT.1	W-24091B	01/08/2010	01/15/2010		43.06
MODICA BROTHERS	2010 021-451-030	TIRES, TUBES	LABOR 25.00/PCT.1	W-24054F	01/08/2010	01/15/2010		25.00
MODICA BROTHERS	2010 021-451-030	TIRES, TUBES	LABOR 115.00/PCT.1	W-24058E	01/08/2010	01/15/2010		500.99
MODICA BROTHERS	2010 021-451-030	TIRES, TUBES	LABOR 25.00/PCT.1	W-240224	01/08/2010	01/15/2010		35.00
MOTT WHOLESALE, INC.	2010 021-451-028	MACHINERY MAINT	8817/PCT.1	8817	01/08/2010	01/15/2010		259.80
MUSTANG CAT	2010 021-451-028	MACHINERY MAINT	LABOR 410.41/079290	WORK0598867	01/11/2010	01/15/2010		795.88
MUSTANG CAT	2010 021-451-028	MACHINERY MAINT	079290/PCT.1	PART2713652	01/11/2010	01/15/2010		130.30
O'REILLY AUTO PARTS	2010 021-451-028	MACHINERY MAINT	591681/PCT.1	1451302948	01/08/2010	01/15/2010		73.25
O'REILLY AUTO PARTS	2010 021-451-028	MACHINERY MAINT	591681/PCT.1	1451303966	01/08/2010	01/15/2010		7.39
O'REILLY AUTO PARTS	2010 021-451-028	MACHINERY MAINT	591681/PCT.1	1451304401	01/08/2010	01/15/2010		30.75
PARKER LUMBER	2010 021-451-040	MISCELLANEOUS SU	22700/PCT.1	20803	01/08/2010	01/15/2010		17.99
PARKER LUMBER	2010 021-451-040	MISCELLANEOUS SU	22700/PCT.1	20850	01/08/2010	01/15/2010		14.57
PARKER LUMBER	2010 021-451-040	MISCELLANEOUS SU	22700/PCT.1	20871	01/08/2010	01/15/2010		208.98
PARKER LUMBER	2010 021-451-040	MISCELLANEOUS SU	22700/PCT.1	20924	01/08/2010	01/15/2010		4.17
PARKER LUMBER	2010 021-451-040	MISCELLANEOUS SU	22700/PCT.1	21039	01/08/2010	01/15/2010		42.06
PARKER LUMBER	2010 021-451-040	MISCELLANEOUS SU	22700/PCT.1	21051	01/08/2010	01/15/2010		27.74
PARKER LUMBER	2010 021-451-040	MISCELLANEOUS SU	22700/PCT.1	21064	01/08/2010	01/15/2010		17.99
PARKER LUMBER	2010 021-451-040	MISCELLANEOUS SU	22700/PCT.1	21230	01/08/2010	01/15/2010		457.87
PARKER LUMBER	2010 021-451-040	MISCELLANEOUS SU	22700/PCT.1	21251	01/08/2010	01/15/2010		467.87
SULLIVANS HARDWARE	2010 021-451-028	MACHINERY MAINT	100986/PCT.1	100986	01/08/2010	01/15/2010		51.49
SULLIVANS HARDWARE	2010 021-451-028	MACHINERY MAINT	101314/PCT.1	101314	01/08/2010	01/15/2010		18.27
SULLIVANS HARDWARE	2010 021-451-028	MACHINERY MAINT	101764/PCT.1	101764	01/08/2010	01/15/2010		15.37
TEJAS EQUIPMENT INC	2010 021-451-028	MACHINERY MAINT	00025/PCT.1	22054H	01/08/2010	01/15/2010		157.32
TEJAS EQUIPMENT INC	2010 021-451-028	MACHINERY MAINT	LABOR 659.10/00025/	R22064H	01/08/2010	01/15/2010		997.80
TEJAS EQUIPMENT INC	2010 021-451-028	MACHINERY MAINT	00025/PCT.1	22143H	01/08/2010	01/15/2010		47.50
THE CAP SHOP	2010 021-451-044	UNIFORMS	8 SHIRT LOGOS/3 SHI	12-15-09PCT1	01/08/2010	01/15/2010		104.01
TIMBERMANS SUPPLY	2010 021-451-028	MACHINERY MAINT	12023/PCT.1	226541	01/08/2010	01/15/2010		88.82
TIMBERMANS SUPPLY	2010 021-451-028	MACHINERY MAINT	12023/PCT.1	226544	01/08/2010	01/15/2010		9.95
TIMBERMANS SUPPLY	2010 021-451-028	MACHINERY MAINT	12023/PCT.1	226542	01/08/2010	01/15/2010		106.32
TIMBERMANS SUPPLY	2010 021-451-028	MACHINERY MAINT	12023/PCT.1	226710	01/08/2010	01/15/2010		75.00
TYLER COUNTY AUTO PARTS	2010 021-451-028	MACHINERY MAINT	7050/PCT.1	427489	01/08/2010	01/15/2010		47.52
TYLER COUNTY AUTO PARTS	2010 021-451-028	MACHINERY MAINT	7050/PCT.1	427732	01/08/2010	01/15/2010		31.82
TYLER COUNTY AUTO PARTS	2010 021-451-028	MACHINERY MAINT	7050/PCT.1	428045	01/08/2010	01/15/2010		48.75
TYLER COUNTY AUTO PARTS	2010 021-451-028	MACHINERY MAINT	7050/PCT.1	428255	01/08/2010	01/15/2010		7.39
WAL-MART COMMUNITY	2010 021-451-028	MACHINERY MAINT	00195371/PCT1	5371:1-10	01/08/2010	01/15/2010		99.74
WEB STORM COMPUTERS	2010 021-451-028	MACHINERY MAINT	LABOR 50.00-1097/P	1097	01/11/2010	01/15/2010		125.00

12,534.65

## ALL RECORDS FROM 01/15/2010 TO 01/15/2010 DATE-TO-BE-PAID

VENDOR NAME	ACCOUNT #	ACCOUNT NAME	ITEM/REASON	INVOICE #	VP DATE	DATE TBP	PO NO	AMOUNT
C & M RENTAL, L.F.	2010 022-451-022	ROAD MATERIAL	1323/PCT.2	1323	01/08/2010	01/15/2010		858.90
SALDO CALLENS CO INC	2010 022-451-028	MACHINERY MAINT	TYL2/PCT.2	18890	01/09/2010	01/15/2010		174.18
CDI	2010 022-451-025	UTILITIES	936-969-2645/0-PCT.	264510:1-10	01/12/2010	01/15/2010		7.75
D & J TIRE, INC	2010 022-451-030	TIRES, TUBES	37013/PCT.2	703136	01/09/2010	01/15/2010		708.00
D & J TIRE, INC	2010 022-451-030	TIRES, TUBES	37013/PCT.2	703139	01/09/2010	01/15/2010		313.92
D & J TIRE, INC	2010 022-451-030	TIRES, TUBES	37013/PCT.2	701552	01/08/2010	01/15/2010		281.90
GARDNER OIL, INC.	2010 022-451-029	GAS, OIL, GREASE	TYCO PCT.2	96514	01/08/2010	01/15/2010		3,333.73
GULF WELDING	2010 022-451-028	MACHINERY MAINT	030133/PCT.2	75945	01/08/2010	01/15/2010		31.50
HAVIS FEED AND HARDWARE	2010 022-451-028	MACHINERY MAINT	PCT.2	929807PCT2	01/08/2010	01/15/2010		11.63
JERRYS SAW SHOP	2010 022-451-028	MACHINERY MAINT	19698/PCT.2	19698	01/08/2010	01/15/2010		115.50
LANSLOWNE-MOODY COMPANY	2010 022-451-028	MACHINERY MAINT	TYL09/PCT.2	1189522	01/09/2010	01/15/2010		1,465.37
LANSLOWNE-MOODY COMPANY	2010 022-451-028	MACHINERY MAINT	1889946/PCT.2	1889946	01/12/2010	01/15/2010		209.02
MODICA BROTHERS	2010 022-451-030	TIRES, TUBES	LABOR 87.95/PCT.2	W-240775	01/08/2010	01/15/2010		87.95
MODICA BROTHERS	2010 022-451-030	TIRES, TUBES	LABOR 258.16/PCT.2	W-240214	01/09/2010	01/15/2010		258.16
MOTT WHOLESALE, INC.	2010 022-451-028	MACHINERY MAINT	8815/PCT.2	8815	01/08/2010	01/15/2010		89.90
MUSTANG CAT	2010 022-451-028	MACHINERY MAINT	0792910/PCT.2	PART2483625	01/11/2010	01/15/2010		49.05
MUSTANG CAT	2010 022-451-028	MACHINERY MAINT	0792910/PCT.2	PART2710923	01/11/2010	01/15/2010		35.20
MUSTANG CAT	2010 022-451-028	MACHINERY MAINT	0792910/PCT.2	PART2715141	01/11/2010	01/15/2010		427.80
MUSTANG CAT	2010 022-451-028	MACHINERY MAINT	0792910/PCT.2	PART2715142	01/11/2010	01/15/2010		15.00
O'REILLY AUTO PARTS	2010 022-451-028	MACHINERY MAINT	591682/PCT.2	1451303245	01/08/2010	01/15/2010		45.45
O'REILLY AUTO PARTS	2010 022-451-028	MACHINERY MAINT	591682/PCT.2	1451303247	01/08/2010	01/15/2010		39.66
O'REILLY AUTO PARTS	2010 022-451-028	MACHINERY MAINT	591682/PCT.2	1451303250	01/08/2010	01/15/2010		19.98
SOUTHWESTERN LABORATOR	2010 022-451-028	MACHINERY MAINT	E09-105/PCT.2	08091108	01/08/2010	01/15/2010		522.00
SOUTHWESTERN LABORATOR	2010 022-451-028	MACHINERY MAINT	E09-105/PCT.2	08100101	01/11/2010	01/15/2010		125.00
SULLIVANS HARDWARE	2010 022-451-028	MACHINERY MAINT	PCT.2	101501	01/08/2010	01/15/2010		3.55
THE CAP SHOP	2010 022-451-044	UNIFORMS	10 SHIRT LOGO/NAME	12/03PCT2	01/08/2010	01/15/2010		111.96
TIMBERMANS SUPPLY	2010 022-451-028	MACHINERY MAINT	12024/PCT.2	226378	01/08/2010	01/15/2010		81.36
TIMBERMANS SUPPLY	2010 022-451-028	MACHINERY MAINT	12024/PCT.2	226298	01/08/2010	01/15/2010		371.07
TIMBERMANS SUPPLY	2010 022-451-028	MACHINERY MAINT	12024/PCT.2	226476	01/08/2010	01/15/2010		62.21
TIMBERMANS SUPPLY	2010 022-451-028	MACHINERY MAINT	12024/PCT.2	226677	01/08/2010	01/15/2010		13.28
TIMBERMANS SUPPLY	2010 022-451-028	MACHINERY MAINT	12024/PCT.2	226682	01/08/2010	01/15/2010		111.53
U PUMP IT	2010 022-451-029	GAS, OIL, GREASE	UP TYLERO CP2/PCT.2	804871	01/08/2010	01/15/2010		309.86
WAL-MART COMMUNITY	2010 022-451-028	MACHINERY MAINT	00625559/PCT.2	5559:12-09	01/09/2010	01/15/2010		509.82

10,466.15



## ALL RECORDS FROM 01/15/2010 TO 01/15/2010 DATE-TO-BE-PAID

VENDOR NAME	ACCOUNT #	ACCOUNT NAME	ITEM/REASON	INVOICE #	VP DATE	DATE TBP PD NO	AMOUNT
CIRCLE D DIRT & DOZER	2010 023-451-032	ROAD MATERIAL	1237/PCT.3	1237	01/12/2010	01/15/2010	1,560.00
GARDNER OIL, INC.	2010 023-451-029	GAS, OIL, GREASE	TYCO PCT3	96332	01/12/2010	01/15/2010	1,127.98
JACK ALEXANDER, LTD.	2010 023-451-032	ROAD MATERIAL	TYL003/PCT.3	19427	01/11/2010	01/15/2010	1,014.83
LAKENAY TIRE & SERVICE	2010 023-451-030	TIRES, TUBES	LABOR 102.00/PCT.3	32325	01/12/2010	01/15/2010	228.90
LAKENAY TIRE & SERVICE	2010 023-451-030	TIRES, TUBES	LABOR 71.25/PCT.3	32327	01/12/2010	01/15/2010	121.20
PARKER LUMBER	2010 023-451-028	MACHINERY MAINTN	22710/PCT.3	20839*	01/11/2010	01/15/2010	45.42
POWERPLAN	2010 023-451-028	MACHINERY MAINTN	LABOR 220.00/PCT.3	144818	01/11/2010	01/15/2010	415.75
POWERPLAN	2010 023-451-028	MACHINERY MAINTN	PCT.3	110274	01/11/2010	01/15/2010	248.92
SOUTHERN TIRE MART, LLC	2010 023-451-030	TIRES, TUBES	115736/PCT.3	64042322	01/12/2010	01/15/2010	1,038.20
TIMBERMANS SUPPLY	2010 023-451-028	MACHINERY MAINTN	12025/PCT.3	226379	01/11/2010	01/15/2010	12.95
TIMBERMANS SUPPLY	2010 023-451-028	MACHINERY MAINTN	12025/PCT.3	226475	01/11/2010	01/15/2010	42.00
TYLER GENERAL FEED & RAN	2010 023-451-044	UNIFORMS	327013/PCT.3	327013	01/12/2010	01/15/2010	155.70
TYLER COUNTY AUTO PARTS	2010 023-451-029	GAS, OIL, GREASE	7052/PCT.3	427702	01/11/2010	01/15/2010	54.39
TYLER COUNTY AUTO PARTS	2010 023-451-028	MACHINERY MAINTN	7052/PCT.3	428246	01/11/2010	01/15/2010	173.74
WAL-MART COMMUNITY	2010 023-451-040	MISCELLANEOUS SU	00201559/PCT.3	1559-12-09	01/12/2010	01/15/2010	9.00
WARREN EQUIPMENT CO.	2010 023-451-028	MACHINERY MAINTN	39585/PCT.3	39585	01/12/2010	01/15/2010	16.50

---

 5,974.14

## ALL RECORDS FROM 01/15/2010 TO 01/15/2010 DATE-TO-BE-PAID

VENDOR NAME	ACCOUNT #	ACCOUNT NAME	ITEM/REASON	INVOICE #	VP DATE	DATE TRP	PC NO	AMOUNT
ALLISON CHEVROLET	2010 024-451-028	MACHINERY MAINT	255.50-LABDR/PCT.4	06227	01/08/2010	01/15/2010		552.25
C & M RENTAL, L.P.	2010 024-451-032	ROAD MATERIAL	1322/PCT.4	1322	01/08/2010	01/15/2010		2,410.77
CINTAS CORPORATION #084	2010 024-451-044	UNIFORMS	084-01423/PCT.4	084425859	01/12/2010	01/15/2010		43.00
CINTAS CORPORATION #084	2010 024-451-044	UNIFORMS	084-01423/PCT.4	084427075	01/12/2010	01/15/2010		43.00
CINTAS CORPORATION #084	2010 024-451-044	UNIFORMS	084-01423/PCT.4	084425911	01/12/2010	01/15/2010		43.00
CINTAS CORPORATION #084	2010 024-451-044	UNIFORMS	084-01423/PCT.4	084425913	01/12/2010	01/15/2010		43.00
CINTAS CORPORATION #084	2010 024-451-044	UNIFORMS	084-01423/PCT.4	084430725	01/12/2010	01/15/2010		43.00
ETOX INC.	2010 024-451-028	MACHINERY MAINT	TYL003/PCT.4	2314906	01/08/2010	01/15/2010		64.17
GARDNER OIL, INC.	2010 024-451-029	GAS, OIL, GREASE	TY00 PCT4	94955	01/08/2010	01/15/2010		3,419.18
GEMPLER'S	2010 024-451-028	MACHINERY MAINT	00095/PCT.4	1014613355	01/08/2010	01/15/2010		259.95
GEMPLER'S	2010 024-451-028	MACHINERY MAINT	TY 00 PCT 4	1014604009	01/13/2010	01/15/2010		39.00
INTERSTATE BILLING SERV	2010 024-451-028	MACHINERY MAINT	215692/PCT.4	459432	01/08/2010	01/15/2010		71.52
LARRY TREST AUTO BROKER	2010 024-451-028	MACHINERY MAINT	LABDR 150.00/PCT.4	12-23-09PCT.	01/08/2010	01/15/2010		250.00
MODICA BROTHERS	2010 024-451-030	TIRES, TUBES	LABDR 20.00/PCT.4	W-210912	01/08/2010	01/15/2010		20.00
MODICA BROTHERS	2010 024-451-030	TIRES, TUBES	LABDR 179.95/PCT.4	W-210431	01/08/2010	01/15/2010		344.90
MOTT WHOLESALE, INC.	2010 024-451-028	MACHINERY MAINT	PCT.4/8723	8723	01/08/2010	01/15/2010		167.05
MOTT WHOLESALE, INC.	2010 024-451-028	MACHINERY MAINT	PCT.4/8768	8768	01/08/2010	01/15/2010		36.40
MOTT WHOLESALE, INC.	2010 024-451-028	MACHINERY MAINT	PCT.4/8803	8803	01/08/2010	01/15/2010		7.76
MOTT WHOLESALE, INC.	2010 024-451-028	MACHINERY MAINT	PCT.4/8807	8807	01/08/2010	01/15/2010		80.07
OFFICE DEPOT	2010 024-451-040	MISCELLANEOUS SU	43492243/PCT.4	30259791001	01/08/2010	01/15/2010		62.05
SMARTS TRUCK & TRAILER	2010 024-451-028	MACHINERY MAINT	551213/PCT.4	551213	01/08/2010	01/15/2010		70.11
SOUTHERN TIRE MART, LLC	2010 024-451-030	TIRES, TUBES	1115726/PCT.4	44042630	01/08/2010	01/15/2010		32.00
SOUTHERN TIRE MART, LLC	2010 024-451-030	TIRES, TUBES	1115726/PCT.4	44042772	01/08/2010	01/15/2010		179.40
TYLER COUNTY AUTO PARTS	2010 024-451-028	MACHINERY MAINT	874/E00	429117	01/08/2010	01/15/2010		4.69
WAL-MART COMMUNITY	2010 024-451-040	MISCELLANEOUS SU	00901591/PCT.4	1591412-09	01/08/2010	01/15/2010		41.17

8,519.12







## ALL RECORDS FROM 01/15/2010 TO 01/15/2010 DATE-TO-BE-PAID

VENDOR NAME	ACCOUNT #	ACCOUNT NAME	ITEM/REASON	INVOICE #	VF DATE	DATE TBP PD ME	AMOUNT
LEXIS-NEXIS	2010 036-492-050	LIBRARY BOOKS &	1134N6/CDA	0911073703	01/11/2010	01/15/2010	77.00
LEXIS-NEXIS	2010 036-492-050	LIBRARY BOOKS &	0912427793/DSJLD	0912427793	01/11/2010	01/15/2010	40.00
LEXIS-NEXIS	2010 036-492-050	LIBRARY BOOKS &	1134N6/CDA	0912100913	01/14/2010	01/15/2010	77.00
WEST GROUP	2009 036-492-050	LIBRARY BOOKS &	1000640613/JP3	819467960	12/21/2009	01/15/2010	132.50
WEST GROUP	2009 036-492-050	LIBRARY BOOKS &	1003228962/CONST2	819494260	12/21/2009	01/15/2010	42.50
							-----
							369.00

## ALL RECORDS FROM 01/15/2010 TO 01/15/2010 DATE-TO-BE-PAID

VENDOR NAME	ACCOUNT #	ACCOUNT NAME	ITEM/REASON	INVOICE #	VP DATE	DATE TBP PD WD	AMOUNT
ANGELINA COUNTY WASTE	2010 037-451-043	CONTAINER HAULS	00631/COLL.CTR.	532192	01/08/2010	01/15/2010	513.60
D & D PLUMBING - BK	2010 037-451-028	MACHINERY MAINTN	225.00-LABOR/COLL C	088488	01/12/2010	01/15/2010	225.00
GARDNER OIL, INC.	2010 037-451-029	GAS, OIL, GREASE TYCO	COLLECTION	711995	01/08/2010	01/15/2010	509.26
I.E.S.I. HARDIN CO LAND	2010 037-451-043	CONTAINER HAULS	052032496/COLL.CTR.	1500000817	01/08/2010	01/15/2010	1,260.00
I.E.S.I. HARDIN CO LAND	2010 037-451-043	CONTAINER HAULS	052032496/COLL.CTR.	0003272074	01/08/2010	01/15/2010	1,488.00
KYM INDUSTRIES, INC.	2010 037-451-028	MACHINERY MAINTN	34588/PCT.4	34588	01/12/2010	01/15/2010	39.12
LAKEWAY TIRE & SERVICE	2010 037-451-028	MACHINERY MAINTN	253.25-LABOR/COLL C	55254	01/08/2010	01/15/2010	735.02
MILL MASTER MACHINE WOR	2010 037-451-028	MACHINERY MAINTN	A2279/PCT.4	A2279	01/08/2010	01/15/2010	57.60
SULLIVANS HARDWARE	2010 037-451-028	MACHINERY MAINTN	COLL.CTR.	101402	01/08/2010	01/15/2010	5.49
WAL-MART COMMUNITY	2010 037-451-028	MACHINERY MAINTN	10142157/COLL CTR	007512	01/08/2010	01/15/2010	2.88
WALLING SIGNS & GRAPHIC	2010 037-451-040	MISCELLANEOUS SU	4300/COLL CTR.	4300	01/08/2010	01/15/2010	1,197.00
							4,633.77





## ALL RECORDS FROM 01/15/2010 TO 01/15/2010 DATE-TO-BE-PAID

VENDOR NAME	ACCOUNT #	ACCOUNT NAME	ITEM/REASON	INVOICE #	VP DATE	DATE TRP	PO NO	AMOUNT
GARDNER OIL, INC.	2010 050-492-005	MISCELLANEOUS	UF CRIMDIS UF /CDA	804637	01/11/2010	01/15/2010		104.61
GARDNER OIL, INC.	2010 050-492-005	MISCELLANEOUS	UF CRIMDIS UF /CDA	804450	01/11/2010	01/15/2010		217.16
MUSIC MOUNTAIN WATER CO	2010 050-492-005	MISCELLANEOUS	81654100/CDA	1218011090	01/14/2010	01/15/2010		35.14
T.D.C.A.A.	2010 050-492-005	MISCELLANEOUS	TDCAA MEMB/HENSARLI	2/2010-2/201	01/14/2010	01/15/2010		55.00
TEXAS POLICE ASSC	2010 050-492-005	MISCELLANEOUS	HENSARLING,ERIC/MEM	12/31/2009	01/09/2010	01/15/2010		30.00
U PUMP IT	2010 050-492-005	MISCELLANEOUS	UF CRIMDIS UF/CDA	804814	01/14/2010	01/15/2010		115.80
WAL-MART COMMUNITY	2010 050-492-005	MISCELLANEOUS	00960428/CDA	0428:11-09	01/11/2010	01/15/2010		76.62
WAL-MART COMMUNITY	2010 050-492-005	MISCELLANEOUS	00960428/CDA	0428:12-09B	01/14/2010	01/15/2010		83.00
								717.33

## ALL RECORDS FROM 01/15/2010 TO 01/15/2010 DATE-TO-BE-PAID

VENDOR NAME	ACCOUNT #	ACCOUNT NAME	ITEM/REASON	INVOICE #	VP DATE	DATE TBP PD	PO NO	AMOUNT
A T & T MOBILITY	2010 053-451-009	UTILITIES	JUDGE DWENS/MTHLY.	42741-10	01/12/2010	01/15/2010		104.48
AMERICAN EXPRESS	2010 053-451-007	SUPPLIES & OPERA	8-22001/CSCD	822001:12-09	01/08/2010	01/15/2010		9.00
BARKER, MARY	2010 053-451-015	TRAVEL/FURNISHED	BARKER, MARY/MILEAGE	1/11-12/10MB	01/13/2010	01/15/2010		102.00
BARKER, MARY	2010 053-451-015	TRAVEL/FURNISHED	BARKER, MARY/PER DIE	1/11-12/10MB	01/13/2010	01/15/2010		22.20
CORRECTIONS SOFTWARE SO	2010 053-451-016	PROFESSIONAL FEE	23172/CSCD	23172	01/09/2010	01/15/2010		395.00
DE LAGE LANDEN PUBLIC F	2010 053-451-007	SUPPLIES & OPERA	270597/CSCD	4325072	01/08/2010	01/15/2010		105.50
GLAWSON, JAMIE	2010 053-451-015	TRAVEL/FURNISHED	GLAWSON, JAMIE/MILEA	1/11-12/10J6	01/13/2010	01/15/2010		88.00
GLAWSON, JAMIE	2010 053-451-015	TRAVEL/FURNISHED	GLAWSON, JAMIE/PER D	1/11-12/10J6	01/13/2010	01/15/2010		55.00
GLAWSON, JAMIE	2010 053-451-015	TRAVEL/FURNISHED	GLAWSON, JAMIE/HOTEL	1/11/10J6	01/13/2010	01/15/2010		192.10
QUILL CORPORATION	2010 053-451-007	SUPPLIES & OPERA	02772734/CSCD	2080342	01/09/2010	01/15/2010		475.30
TYLER COUNTY	2010 053-437-014	CCP CONTRACT SER	COMM.SRV./JAN. 2010	20199	01/09/2010	01/15/2010		2,000.00

---

 4,149.58

ALL RECORDS FROM 01/15/2010 TO 01/15/2010 DATE-TO-BE-PAID

VENDOR NAME	ACCOUNT #	ACCOUNT NAME	ITEM/REASON	INVOICE #	VP DATE	DATE TBP PD NO	AMOUNT
ALLEN, TERRY	2010 054-437-011	TRAINING & EDUCA	ALLEN,TERRY/MILEAGE	176-7710TA	01/12/2010	01/15/2010	244.55
HARDIN COUNTY	2010 054-363-035	DETENTION COLLED	20020140/JUPRO	20020140	01/11/2010	01/15/2010	23.05
INDOFF OFFICE SUPPLIES	2010 054-437-007	OFFICE SUPPLIES-	183751/JUPRO	1570332	01/11/2010	01/15/2010	13.99
OFFICE DEPOT	2010 054-437-007	OFFICE SUPPLIES-	62242633/JUPRO	502923240001	01/11/2010	01/15/2010	50.23
THE JUVENILE JUSTICE AS	2010 054-437-007	OFFICE SUPPLIES-	ALLEN, TERRY/JUPRO	2010ANN.MEM.	01/12/2010	01/15/2010	40.00
WEST GROUP	2010 054-437-007	OFFICE SUPPLIES-	1000442209/JUPRO	819649325	01/11/2010	01/15/2010	42.50
							433.32



## ALL RECORDS FROM 01/15/2010 TO 01/15/2010 DATE-TO-BE-PAID

VENDOR NAME	ACCOUNT #	ACCOUNT NAME	ITEM/REASON	INVOICE #	VP DATE	DATE TBP	PO NO	AMOUNT
ALLISON CHEVROLET	2010 076-451-028	VEHICLE OPERATIO	7.00-LABOR/EOC	06433	01/05/2010	01/15/2010		14.50
ALLISON CHEVROLET	2010 076-451-028	VEHICLE OPERATIO	7.00-LABOR/EOC	06432	01/05/2010	01/15/2010		14.50
INDOFF OFFICE SUPPLIES	2009 076-451-007	OFFICE SUPPLIES	183922/EOC	1563592	12/22/2009	01/15/2010		315.81
LAKEMAY TIRE & SERVICE	2010 076-451-028	VEHICLE OPERATIO	LABOR 25.00/EOC	062524	01/07/2010	01/15/2010		25.00
PARKER LUMBER	2009 076-451-028	VEHICLE OPERATIO	22735/EOC	21119	12/22/2009	01/15/2010		5.78
PARKER LUMBER	2009 076-451-028	VEHICLE OPERATIO	22735/EOC	20898	12/22/2009	01/15/2010		7.10
PARKER LUMBER	2009 076-451-028	VEHICLE OPERATIO	22735/EOC	21040	12/22/2009	01/15/2010		36.99
TYLER COUNTY AUTO PARTS	2009 076-453-045	STANDBY MAINTENA	000874/EOC	427664	12/22/2009	01/15/2010		10.99
U PUMP IT	2010 076-451-029	STANDBY FUEL	UPTYCOEMERMGT	804865	01/07/2010	01/15/2010		134.84
U PUMP IT	2010 076-453-045	STANDBY MAINTENA	UPTYCOEMERMGT	804865A	01/07/2010	01/15/2010		264.25
WALLING SIGNS & GRAPHIC	2010 076-451-012	TRAINING & TRAVE	DIABOND/EOC	4260	01/05/2010	01/15/2010		174.40
WALLING SIGNS & GRAPHIC	2010 076-453-045	STANDBY MAINTENA	DOOR DECALS/EOC	4260A	01/05/2010	01/15/2010		192.00

---

 1,200.15

ALL RECORDS FROM 01/15/2010 TO 01/15/2010 DATE-TO-BE-PAID

VENDOR NAME	ACCOUNT #	ACCOUNT NAME	ITEM/REASON	INVOICE #	VP DATE	DATE TBP PD NO	AMOUNT
D & D PLUMBING - DK	2010 089-451-028	REPAIRS & MAINTE	225.00-LABDR/NUTR C	088482	01/12/2010	01/15/2010	355.00
DIRECTV COMMERCIAL	2010 089-451-028	REPAIRS & MAINTE	035535115/NUTR.CTR.	1166431103	01/08/2010	01/15/2010	79.99
ENERGY	2010 089-451-035	UTILITIES	451094/NUTR. STR.	451094:1-10	01/11/2010	01/15/2010	755.49
ENERGY	2010 089-451-035	UTILITIES	451093/TY CO SHELTE	451093:1-10	01/12/2010	01/15/2010	781.24
SULLIVANS HARDWARE	2010 089-451-028	REPAIRS & MAINTE	101778/EGG-NUTR. CT	101778	01/09/2010	01/15/2010	7.99
							----- 1,849.71
			TOTAL PAYABLES				296,352.62



# TEXAS ASSOCIATION *of* COUNTIES RISK MANAGEMENT POOL

## WORKERS' COMPENSATION 1st QUARTER INVOICE 114978

Policy Period: January 01, 2010 - January 01, 2011  
Invoice Due Date: February 1, 2010

Member Name: Tyler County  
Contract No.: 2290

Class Code	Description of Risk	Number of Employees	Estimated Payroll	Rate	Manual Premium
090140	Bldg. Maintenance & Janitors	6	120,872	6.19	7,482
088100	Clerical	63	1,357,022	0.34	4,614
056060	Co. & Drain Dist. Commissioners	4	160,560	1.92	3,083
088102	Election Personnel & Jurors	400	20,000	0.34	68
087420	Juv Probation, Collectors, Sales	2	80,592	0.54	435
075900	Landfill, Garbage Reduction	3	49,728	8.48	4,217
077200	Law Enforcement, Ambulance	29	936,888	4.58	42,909
055060	Road Employees-Paving, Repaving	22	690,942	9.42	65,087
088310	Vet Hospital & Animal Control	1	4,800	2.31	111
772009	Vol. Le @ \$5,200	2	10,400	4.58	476

Total Payroll / Employees	532	3,431,804		\$128,482
---------------------------	-----	-----------	--	-----------

### PREMIUM SUMMARY

Total Manual Contribution		\$128,482
Underwriting Modifier	100.00 %	
Experience Modifier	1.09	
Member Discount	30.00 %	
Preferred Liability - Property Discount	10.00 %	
Estimated Worker's Compensation Contribution		\$88,229.00
Less Annual Renewal Credit if Applicable		\$30,167.00
Annual Invoiced Contribution		\$58,062.00
	1st Quarter Payment Due:	\$14,517.00

# TYLER COUNTY JUVENILE PROBATION

TERRY ALLEN  
Chief Juvenile Probation Officer

TONYA SHEFFIELD  
Juvenile Probation Officer

KATHY HARRIS  
Secretary

ADDRESS: 100 West Bluff - Rm. 108  
Woodville, Texas 75979


PHONE: 409-283-2503

FAX: 409-283-6305

## JUVENILE PROBATION REPORT --- DECEMBER 2009

BEGINNING NUMBER OF JUVENILES	10
NEW CASES THIS MONTH	0
TERMINATIONS	1
TOTAL NUMBER ON PROBATION	9
CRISIS INTERVENTION	1
INTENSIVE SUPERVISION	0
SPECIAL NEEDS DIVERSIONARY PROGRAM (SNDP) SUPERVISION	3
CONDITIONAL RELEASE	3
TYC - SENTENCING	0

Respectfully Submitted,



Terry Allen  
Chief Juvenile Probation Officer

**\*Probation fees and Restitution collected for the month of December:**

Probation fees	\$ 0.00
Restitution (victim) fees	\$ 0.00
Restitution (detention) fees	\$ 0.00
Reimbursement for treatment	\$ 0.00





RECEIPTS:

TOTAL MONTHLY DEPOSIT	\$ 8490.18
BREAK-DOWN OF RECEIPTS	
COUNTY SHARE OF FINES	\$ 3235.08
CIVIL FEES	250.00
DSC FEES	60.02
MISC. -	10.00
TOTAL OF THOSE LISTED ABOVE FOR GENERAL FUND	\$ 3555.10
OVER PAYMENT -	-0-
OMNI BASE FTA PROGRAM - FTLA	\$ -0-
CHILD SEAT BELT - CBELT	45.00
PARKS & WILDLIFE - P&W	85.00
JUDICIAL & COURT PERSONNEL TRAINING - JCPT (&CPT)	-0-
LAW ENFORCEMENT OFFICER'S STANDARDS & EDUCATION - LEOSE&CE	-0-
LAW ENFORCEMENT MANAGEMENT INSTITUTE - LEMI	-0-
LAW ENFORCEMENT OFFICER'S ADMINISTRATIVE - LEOA	-0-
CRIMINAL JUSTICE PLANNING - CVC	-0-
CRIMINAL JUSTICE PLANNING - CJP	-0-
JURY REIMBURSEMENT FEE - JRF	186.00
COMPREHENSIVE REHABILITATION - CR	-0-
GENERAL REVENUE - GR	-0-
CHILD SAFETY-CS; OR BAT - (CS)	20.00
TRAFFIC - TFC	141.00
ARREST FEE #1; S/O-\$ 20.50 STATE \$ 226.00	246.50
ARREST FEE #2; S/O \$-0- STATE \$ -0-	-0-
CONSOLIDATED COURT COST - CCC	2063.33
JUVENILE CRIME & DELINQUENCY - JCD	-0-
FUGITIVE APPREHENSION - FA	-0-
COURTHOUSE SECURITY - CHS	208.00
OPERATOR'S & CHAUFFEUR'S LICENSE - OCL	-0-
TIME PAYMENT - TP	-0-
SFF - INDIGENT LEGAL STATE FEE FOR CIVIL	20.00
CORRECTIONAL MANAGEMT INSTI. OF TX - CMIT	-0-
JUSTICE COURT TECHNOLOGY FUND - JPTEC	292.00
SEAT BELT - SBELT	50.00
JUSTICE OF PEACE PRIVATE COLLECTION FEES 30% - PC30	105.08
STATE TRAFFIC FEE - STF	1112.67
JUDICIARY SUPPORT FEE - JSF	270.00
INDIGENT DEFENSE FEE - IDF	90.50
TOTAL	\$ 8490.18

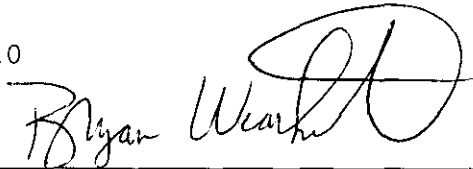
-----

NO CRIMINAL (TRAFFIC) FILED 116    NO OF CRIMINAL (NON-TRAFFIC) FILED 9  
 NO JUVENILE WARNINGS 3 STATEMENTS 3 DETENTION HEARINGS 1 JUVN TRANSFER 1  
 FTA SCHOOL 0 PARENT NON-CONT 0    NO CASE DISPOSED OF 10 NO OF INQUEST 0

CIVIL CASES FILED 6 SMALL CLAIMS CASES FILED 0    EVICTION(FED)CASES FILED 3

EMERGENCY MENTAL 2    D/L SUPENSION 0 STATUARY WARNINGS 41

CLASS C WARRANTS 0    FELONY WARRANTS 10



\_\_\_\_\_  
 JUSTICE OF PEACE, PCT 1, TYLER COUNTY, TEXAS

Martin

### Ogden Surveying LLC

685 CR 2050  
Woodville, TX 75979  
P (409) 283-2033  
F (409) 283-2699

### Invoice

Date	Invoice #
12/15/2009	CR 311461A

Bill To
Tyler County 102 W. Bluff Woodville Texas 75979

Quantity	Description	Rate	Amount
	Survey, Plat and Field Notes 31.46 Acre Tract L. Thunar Tyler County Texas	2,900.00	2,900.00
	Sales Tax - Tyler County	6.75%	195.75
<b>Please Make Check Payable to Ogden Surveying</b>		<b>Total</b>	<b>\$3,095.75</b>

Thank you  
Don Ogden

10-723

VOL. 982 PAGE 808

OGDEN SURVEYING LLC  
685 CR 2050, WOODVILLE TEXAS 75979, (409) 283-2033

31.46 Acre Tract, L. Thunar Survey A-636  
Tyler County, Texas

Field note description of a 31.46 acre tract situated in the L. Thunar Survey, Abstract 636, Tyler County, Texas and being the remainder of a called 40 acre tract conveyed to Henry Barclay by deed recorded in Volume 36 Page 409 Tyler County Deed Records (TCDR). The said 31.46 acre tract being the called 32 acre tract conveyed to Tyler County by deed recorded in Volume 974 Page 503 Official Public Records Tyler County (OPRTC). The said 31.46 acre tract being more particularly described as follows:

*Bearings are based on the south line of a called 80 acre tract being a called 40 acre tract described in Vol. 36 Pg. 409 TCDR and a called 40 acre tract described in Vol. 36 Pg. 410 TCDR, called West.*

Beginning at a buggy axle found on the west side of a branch for the southwest corner of said Barclay 40 acre tract, a 26" forked beech (orig.) Bears S 64 deg 49' E 25.7 feet and a 24" beech (orig.) found leaning Bears S 34 deg 40' E 14.9 feet;

Thence N 04 deg 46' 00" W 1086.10 feet (called N 5 deg W 1088.89 feet) along with the east line of the Texas Timberlands Ltd. called 130 acre tract described in Volume 823 Page 376 OPRTC to a 1/2" iron rod set 16 feet east of a painted line for the northwest corner of said Barclay 40 acre tract and southwest corner of the E. Woodworth called 4.65 acre tract described in Volume 132 Page 349 TCDR, a pine stump hole (orig.) Bears S 35 deg 30' E 7.8 feet, a 14" pin oak Bears S 24 deg 55' W 14.0 feet and a 10" pin oak Bears S 47 deg 23' E 13.9 feet;

Thence East 620.42 feet along with: the south line of said 4.65 acre tract and south line of the J. C. Foster tract described in Volume 110 Page 545 TCDR and with the north line of said Barclay 40 acre tract to a 1/2" iron rod set for the northwest corner of the Gertie Edwards called 3.00 acre tract described in Volume 577 Page 645 OPRTC, a found 1/2" iron rod Bears N 00 deg 49' 13" E 1.79 feet;

Thence S 00 deg 49' 13" W 338.02 feet with the west line of said 3.00 acre tract to a 1/2" iron rod found for the southwest corner of said 3.00 acre tract;

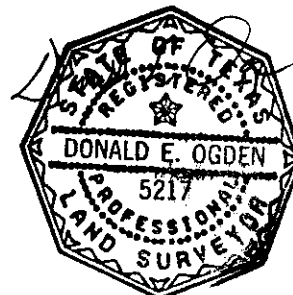
Thence S 89 deg 12' 10" E 480.09 feet with the south line of said 3.00 acre tract to a 1/2" iron rod found on the southwest right of way of County Road 4455, a 14" sweet gum Bears S 43 deg 59' E 21.0 feet and a 20" white oak Bears S 73 deg 11' W 19.3 feet;

Thence N 39 deg 10' 45" E 24.25 feet to a point in the center of said county road, a 1/2" iron rod set for reference Bears N 39 deg 10' 45" E 25.76 feet;

Thence with the center of said county road and east line of said 3.00 acre tract as follows:

- 1) N 36 deg 47' 47" W 97.77 feet to a point, set 1/2" iron rod reference Bears N 59 deg 12' 50" E 25.14 feet
- 2) N 24 deg 46' 32" W 56.43 feet to a point, set 1/2" iron rod reference Bears N 66 deg 04' 31" E 25.00 feet
- 3) N 18 deg 20' 18" W 206.84 feet to a point in the north line of said Barclay 40 acre , a found 1/2" iron rod Bears S 81 deg 27' 41" W 20.96 feet

Thence East with the north line of said Barclay 40 acre tract and along with: the south line of the Joe Foster called 1 acre tract described in Volume 221 Page 656 TCDR and south line of the John Foster called 6 acre tract described in Volume 341 Page 452 TCDR, at 24.84 feet pass a 1/2" iron rod set for reference from which a 22" pine Bears S 89 deg 10' W 3.3 feet, a 20" white oak Bears S 14 deg 00' E 11.4 feet and a found 3/4" pipe at a fence corner Bears S 84 deg 03' 21" E 89.21 feet; and a total distance of 653.86 feet to a 1/2" iron rod set for the northeast corner of said Barclay 40 acre tract and northwest corner of the J. Harper called 40 acre tract described in Volume 36 Page 410 TCDR, an 8" pin oak Bears S 25 deg 04' W 11.6 feet, a 10" magnolia Bears S 57 deg 35' W 31.1 feet and a fence corner Bears N 89 deg 45' E 119.4 feet;



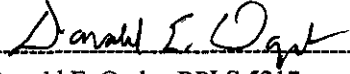
Thence S 02 deg 30' 00" E with the east line of said Barclay 40 acre tract, west line of said Harper 40 acre tract and west line of the Elender Foster called 3 acre tract described in Volume 151 Page 269 TCDR, at 509.64 feet pass a 1/2" iron rod set for reference on the north right of way of County Road 4455 from which a 17" pine Bears S 88 deg 42' W 8.7 feet and a 12" maple Bears N 73 deg 52' W 11.1 feet, and a total distance of 527.82 feet to a 20 d nail set in County Road 4455 for the northeast corner of the Ellen Arline called 5 acre tract described in Volume 90 Page 201 TCDR;

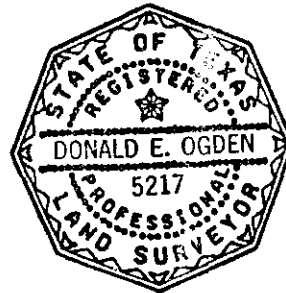
Thence West with the north line of said Arline 5 acre tract, at 108.15 feet pass a 1/2" iron rod set for reference on the south right of way of said county road from which a 30" sweet gum Bears S 60 deg 53' E 18.5 feet, and a total distance of 391.67 feet to a 1/2" iron rod set for the northwest corner of said Arline 5 acre tract, a 5" maple Bears S 76 deg 14' W 12.5 feet and a 14" sweet gum Bears N 08 deg 42' W 32.3 feet;

Thence S 02 deg 30' 00" E 555.56 feet with the west line of said Arline 5 acre tract to a 5" pine on the south line of said Barclay 40 acre tract for the southwest corner of said Arline 5 acre tract, an 18" magnolia Bears S 89 deg 19' W 28.0 feet, a 20" white oak Bears N 67 deg 00' W 15.4 feet, the southeast corner of said Arline 5 acre tract, southeast corner of said Barclay 40 acre tract and southwest corner of said Harper 40 acre tract Bears East 391.67 feet from which a found axle Bears S 02 deg 30' E 0.84 feet and the southeast corner of said Harper 40 acre tract Bears East 1600.12 feet (call 1583.33 feet) from which a 26" beech (orig.) Bears N 08 deg W 19.7 feet;

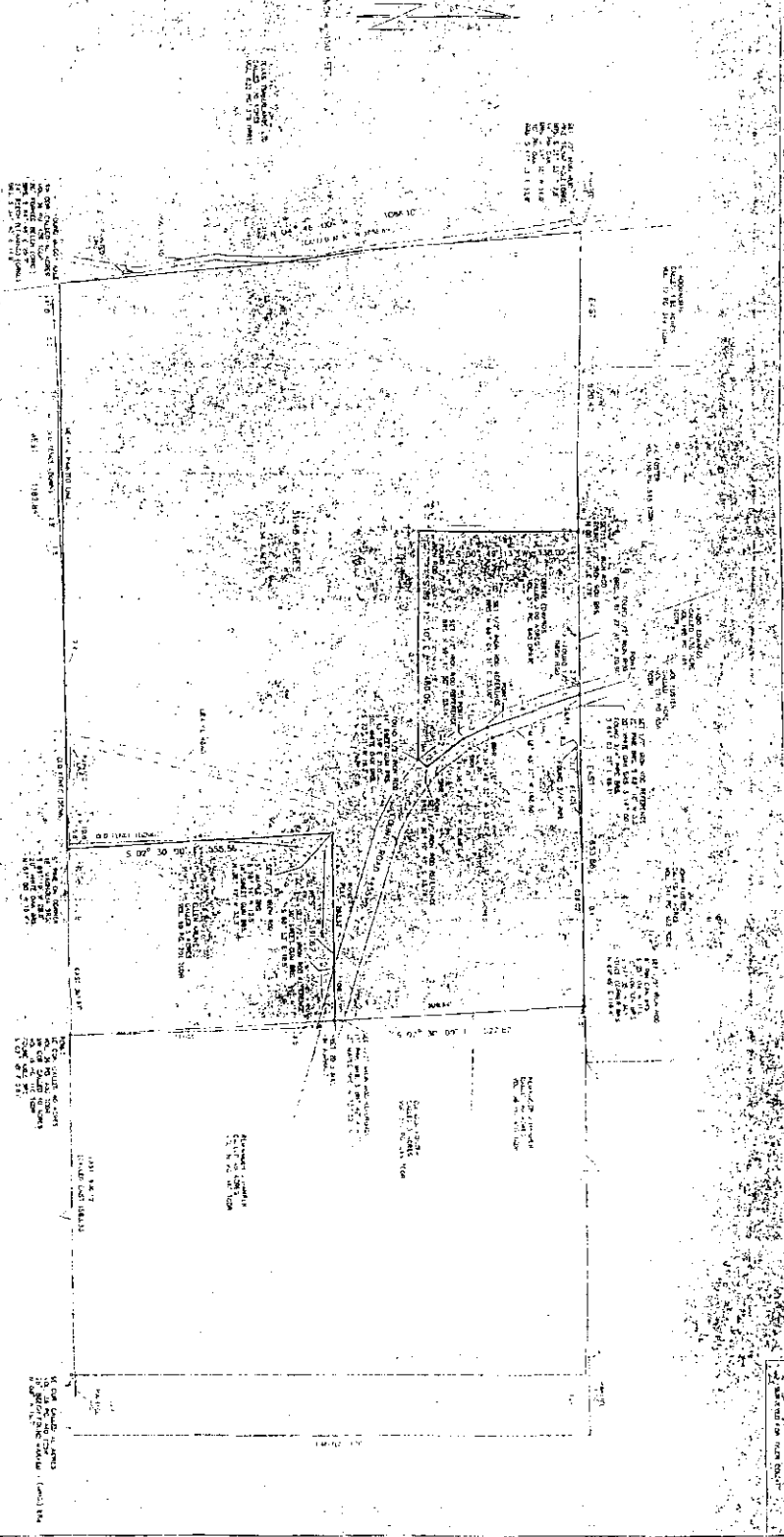
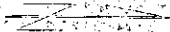
Thence West 1182.84 feet with the south line of said Barclay 40 acre tract and north line of the Crown Pine Timber 3 tract described in Volume 902 Page 666 OPRTC to the Place of Beginning containing 31.46 acres of land more or less.

These field notes are based on a plat and an on the ground survey made by Donald E. Ogden, Registered Professional Land Surveyor No. 5217 December 2009.

  
-----  
Donald E. Ogden RPLS 5217



RECORDER'S MEMORANDUM:  
 This page was reduced  
 for recording purposes.



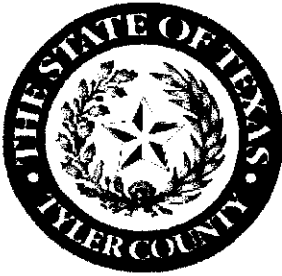
TO HAVE AND TO HOLD unto the said JOHN J. OGDEN, his heirs and assigns forever, all that certain tract of land, situate, lying and being in the County of Tarrant, State of Texas, bounded as follows, to-wit:

BOUNDARY SURVEY PLAT OF A 31.34 ACRE TRACT  
 IN TARRANT COUNTY, TEXAS

JOHN J. OGDEN  
 Surveyor



OGDEN SURVEYING, L.L.C.  
 685 GY 2070  
 ADDICKS, TEXAS 75878  
 (905) 283-5011



# TYLER COUNTY COMMISSIONERS COURT

County Courthouse, Room 101 / Woodville, Texas

Friday  
January 15, 2010  
8:30 AM

MARTIN NASH  
Commissioner, Pct. 1

RUSTY HUGHES  
Commissioner, Pct. 2

JACQUES L. BLANCHETTE  
County Judge

MIKE MARSHALL  
Commissioner, Pct. 3

JACK WALSTON  
Commissioner, Pct. 4

**NOTICE** Is hereby given that a *Special Meeting* of the Tyler County Commissioners Court will be held on the date stated above, at which time the following subjects will be discussed;

*Elizabeth M. Hingley Present*

## Agenda

*"the wisdom to know what's right and the courage to do it"*

*Troy Richardson  
kt Brigit Lumre*

### ➤ CALL TO ORDER

- Establish Quorum
  - Pledge to the Texas Flag: *c/o M. Nash*
  - Acknowledge Guests
  - Invocation - *c/o M. Nash*
- "Honor the Texas Flag: I pledge allegiance to thee, Texas, one state under God, one and indivisible."

### I. CONSIDER/APPROVE:

- ✓ A. Commissioners Court minutes from previous meeting(s) - *D. Gregory NONE AS/17*
- J/m B. The paying of Tyler County bills - *Joyce Moore, Auditor with comp - after credit 1st Q Payment Attached*
- N/A C. Included Monthly Report for Juvenile Probation - *Terry Allen, Chief Probation Officer*
- w/m D. Included Monthly Report for Justice of the Peace, Pct. 1 - *Bryan Weatherford, JP Pct 1*
- E. Rental of port-a-potties for the Dogwood Festival - *J. Blanchette*
- N/w F. Ogden Surveying, LLC invoice for \$2,900.00 - *J. Moore Warren sold to Co R 4/ out of condensation*

### II. PRESENTATIONS:

- A. By: *Lynnette Cruse, Tyler County Tax Assessor Collector to new system. Tax Statements are now all out.*
  - B. To: *Garry Mattingly for service as County Court Bailiff from 2000-2009 - J. Blanchette*
- John Manuel diff're cond'ns Had all problems - but it is giving to be better. Should Not have these issues next year.*

### ➤ ADJOURN

*w/h 8:49*

Jacques L. Blanchette  
County Judge

I do hereby certify that the above Notice of Meeting of the Tyler County Commissioners Court is a true and correct copy of said Notice and that I posted a true and correct copy of said Notice at the Tyler County Courthouse in a place readily accessible to the general public at all times and that said Notice remained so posted continuously for at least 72 hours preceding the scheduled time of said meeting, as is required by Section 551.002 & 551.041

Executed on \_\_\_\_\_ 2009 Time \_\_\_\_\_

Donece Gregory, County Clerk/Ex Officio Member of Commissioners Court

Bv: \_\_\_\_\_ (Deputy)



# TYLER COUNTY COMMISSIONERS COURT

County Courthouse, Room 101 / Woodville, Texas

Friday  
January 15, 2010  
8:30 AM

MARTIN NASH  
Commissioner, Pct. 1

RUSTY HUGHES  
Commissioner, Pct. 2

JACQUES L. BLANCHETTE  
County Judge

MIKE MARSHALL  
Commissioner, Pct. 3

JACK WALSTON  
Commissioner, Pct. 4

**NOTICE** Is hereby given that a *Special Meeting* of the Tyler County Commissioners Court will be held on the date stated above, at which time the following subjects will be discussed;

## Agenda

*"the wisdom to know what's right and the courage to do it"*

### > CALL TO ORDER

- Establish Quorum
- Pledge to the Texas Flag: *c/o M. Nash*  
"Honor the Texas Flag: I pledge allegiance to thee, Texas, one state under God, one and indivisible."
- Acknowledge Guests
- Invocation - *c/o M. Nash*

### I. CONSIDER/APPROVE:

- A. **Commissioners Court minutes** from previous meeting(s) – *D. Gregory*
- B. **The paying of Tyler County bills** – *Joyce Moore, Auditor*
- C. **Monthly Report** for Juvenile Probation – *Terry Allen, Chief Probation Officer*
- D. **Monthly Report** for Justice of the Peace, Pct. 1 – *Bryan Weatherford, JP Pct 1*
- E. **Rental** of port-a-potties for the Dogwood Festival – *J. Blanchette*
- F. **Ogden Surveying, LLC** invoice for \$2,900.00 – *J. Moore*

### II. PRESENTATIONS:

- A. **By:** Lynnette Cruse, Tyler County Tax Assessor Collector
- B. **To:** Garry Mattingly for service as County Court Bailiff from 2000-2009 – *J. Blanchette*

### > ADJOURN

  
Jacques L. Blanchette  
County Judge

I do hereby certify that the above Notice of Meeting of the Tyler County Commissioners Court is a true and correct copy of said Notice and that I posted a true and correct copy of said Notice at the Tyler County Courthouse in a place readily accessible to the general public at all times and that said Notice remained so posted continuously for at least 72 hours preceding the scheduled time of said meeting, as is required by Section 551.002 & 551.041.

Executed on January 12 <sup>2010</sup> ~~2009~~ Time 8:30 AM

Donece Gregory, County Clerk/Ex Officio Member of Commissioners Court

By: Wanda Johnston (Deputy)





# TYLER COUNTY COMMISSIONERS COURT

County Courthouse, Room 101 / Woodville, Texas

Friday  
January 15, 2010  
1:30 PM

MARTIN NASH  
Commissioner, Pct. 1

RUSTY HUGHES  
Commissioner, Pct. 2

JACQUES L. BLANCHETTE  
County Judge

MIKE MARSHALL  
Commissioner, Pct. 3

JACK WALSTON  
Commissioner, Pct. 4

**NOTICE** Is hereby given that a *Special Meeting* of the Tyler County Commissioners Court will be held on the date stated above, at which time the following subjects will be discussed;

## Agenda

*"the wisdom to know the right thing and the courage to do it"*

➤ **CALL TO ORDER**

- Establish quorum

**EXECUTIVE SESSION**

Consult with District Attorney, Joe Smith, in executive session held in accordance with Texas Government Codes 551.071(1)(A), (2) regarding pending and/or contemplated litigation, and/or 5551.074, regarding personnel matters, and/or property acquisition.


➤ **ADJOURN**

  
Jacques L. Blanchette  
County Judge

I do hereby certify that the above Notice of Meeting of the Tyler County Commissioners Court is a true and correct copy of said Notice and that I posted a true and correct copy of said Notice at the Tyler County Courthouse in a place readily accessible to the general public at all times and that said Notice remained so posted continuously for at least 72 hours preceding the scheduled time of said meeting, as is required by Section 551.002 & 551.041.

Executed on 1-12- 2010 Time 11:40 AM

Donece Gregory, County Clerk/Ex Officio Member of Commissioners Court

By:  (Deputy)